



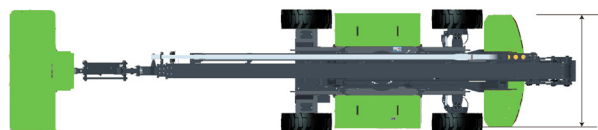
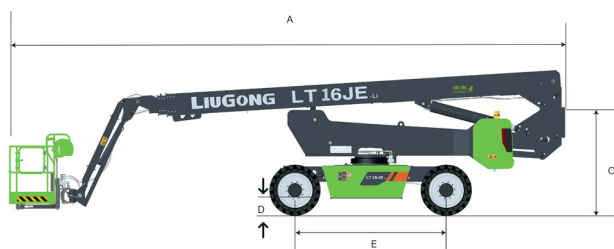
Working Height Max.
Horizontal Reach Max.
Overall Lift Capacity Max.
Overall Width And Length

18.2 m (59'9")
11.3 m (37'1")
300 kg (661 lb)
2.3 x 8.44 m
(7'7" x 27'8")

LT16JE **Telescopic Boom** **Lifts-Electric**

TOUGH WORLD. TOUGH EQUIPMENT.

LT16JE SPECIFICATIONS >>>



DIMENSIONS

| | |
|------------------------------|---|
| Working Height Max. | 18.2 m (59'9") |
| Platform Height Max. at Max. | 16.2 m (53'2") |
| Operating Amplitude Max. | 11.9 m (39'1") |
| Horizontal Reach Max. | 11.3 m (37'1") |
| Platform Size (LxWxH) | 1.83 x 0.76 x 1.1 m (6' x 2'6" x 3'7") |
| A. Length (Stowed/Transport) | 8.44 m (27'8") |
| B. Width (Stowed/Transport) | 2.3 / 2.18 m (7'7" / 7'2") |
| C. Height (Stowed/Transport) | 2.49 / 2.29 m (8'2" / 7'6") |
| D. Ground Clearance | 0.37 m (1'3") |
| E. Wheelbase | 2.36 m (7'9") |

PRODUCTIVITY

| | |
|--|------------------------------|
| Overall Lift Capacity Max. | 300 kg (661 lb) |
| Platform Occupancy Max. | 2 |
| Platform Rotation | ± 90° |
| Vertical Jib Rotation (Up/Down) | -70° ~ +72° |
| Turntable Rotation | 360° Continuous |
| Turntable Tailswing (Boom Raised/Stowed) | 0.8 / 1.28 m (2'7" / 4'2") |
| Drive Speed (Stowed) | 5 km/h (3.10 mph) |
| Drive Speed (Raised) | 1 km/h (0.62 mph) |
| Gradeability | 45 % |
| Tilt Sensor Activation (Front to Back/Side to Side) | X 5° / Y 5° |
| Turning Radius (Inside/Outside) | 2.06 / 4.78 m (6'9" / 15'8") |
| Tire Size (Solid Off-road) | 33 x 12 - 20 |
| Drive Steering Type | 4WD x 2WS |

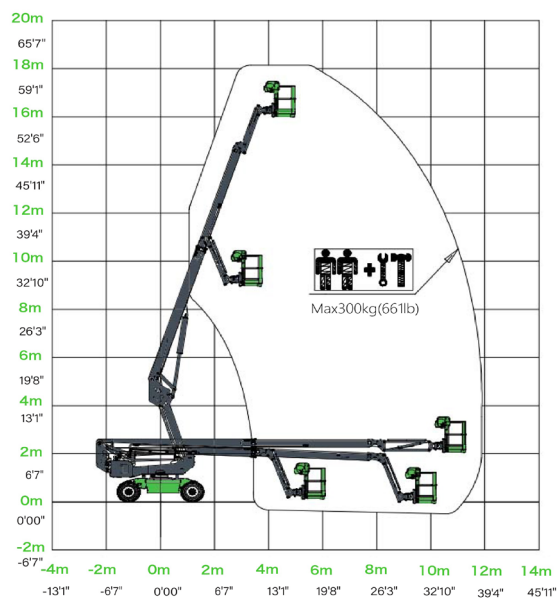
WEIGHT

| | |
|----------------|----------------------|
| Overall Weight | 7,300 kg (17,857 lb) |
|----------------|----------------------|

POWER

| | |
|-------------------------|--------------------|
| Battery (Lithium) | 51.2 V / 304 Ah |
| Charger | 48 V / 60 Ah |
| Lifting Motor | AC 10 kW |
| Drive Motor | AC 3.3 kW |
| Auxiliary Power Unit | 12 VDC |
| Hydraulic Tank Capacity | 65 L (17 gal 1 pt) |

LT16JE Working Range



Guangxi Liugong Machinery Co., Ltd.

No. 1 Liutai Road, Liuzhou, Guangxi 545007, PR China
T: +86 772 3886124 E: overseas@liugong.com
www.liugong.com

Specifications and designs are subject to change without notice. Machines shown may include optional equipment. Liugong standard and optional equipment may vary from region to region. Please consult your Liugong dealer for information specific to your area. Engine power kW is converted to horsepower (1 kW=1.3596 ps and 1 kW=1.3410 hp) in this file.

09/2024 Designed by LiuGong