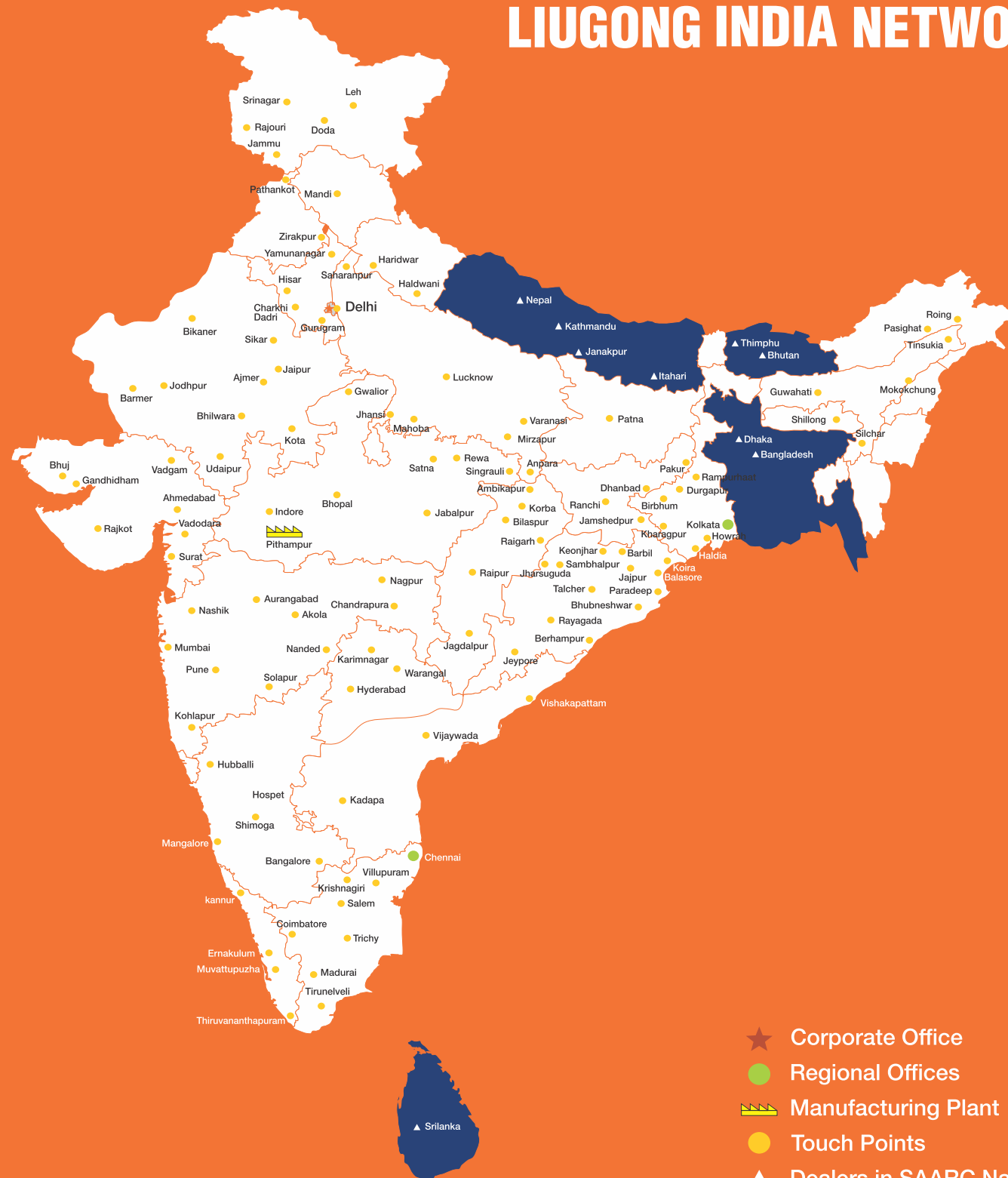


# LIUGONG INDIA NETWORK



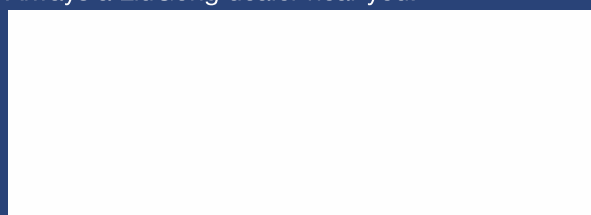
- ★ Corporate Office
- Regional Offices
- 🏭 Manufacturing Plant
- Touch Points
- ▲ Dealers in SAARC Nations



**Excellence Series**

**LIUGONG CARE**  
**1800 1033 852**

Always a LiuGong dealer near you.



Corporate Office:  
 101, Okhla Phase III, New Delhi- 110020, Tel: 011-47272200  
 india@liugong.com

Manufacturing Plant:  
 Plot No. 163, Industrial Area, Sector-III, Pithampur  
 Dist.- Dhar, Madhya Pradesh- 454774, Tel: 07292-416700

[www.liugong.com](http://www.liugong.com)

Like and follow us:



11/2024 LIPL

**Engine**  
**Gross Power**  
**Digging Depth**  
**Bucket Capacity**  
**Operating Weight**  
**Cabin**

Cummins QSM 11  
 375 hp @ 2,000 rpm  
 6,521 mm  
 3.2 m<sup>3</sup> GP  
 48,300 Kg  
 Air Conditioned

**950E**  
**EXCAVATOR**

**TOUGH WORLD. TOUGH EQUIPMENT.**

The Liugong series of logos herein, including but not limited to word marks, device marks, letter of alphabet marks and combination marks, as the registered trademarks of Guangxi Liugong Group Co., Ltd. are used by Guangxi Liugong Machinery Co., Ltd. with legal permission, and shall not be used without permission. Specifications and designs are subject to change without notice. Machines shown may include optional equipment and may not include all standard equipment.



# FIT FOR PURPOSE

Firstly, you need to know that your machine is up to the job; breaking, digging, lifting, working hard – anytime – anywhere. Excavators have got to be tough and they've got to perform.

## OUR NEW 950E HIGH PERFORMANCE FROM THE GROUND UP

### 1 TOUGHER UNDERCARRIAGE

With X-shaped frame built from high strength tensile steel, the 950E's undercarriage is designed to withstand the toughest conditions. Continuous digging, lifting and loading can put excessive stress on machines. The 950E has a long track beam and crawler system that guarantees greater stability. The structure also helps protect key components such as the travel motor from undue stress.

### 2 TOUGHER COMPONENTS

The undercarriage components are tougher too. Heavy duty rollers, reinforced idler frame and optional full track guard guarantee the integrity of our undercarriage. It's this core strength that enables our customers to keep working and earning – around the clock.

### 3 TOUGHER UPPER STRUCTURE

The upper structure of the 950E is built around a reinforced and well-engineered H-beam, allowing the boom to be mounted exactly in the center of the machine. This central positioning helps the boom cope with more stress on the attachment group. It also means better distribution of weight and tension along the entire machine.

### 4 SAFER CAB

Our cabs are designed to protect your most important asset. Your operator. ROPS (Roll Over Protection System) and FOPS (Falling Object Protection System) safeguard your most important asset: your operator in the toughest environment. Visibility is key to protecting your operator and workers on site. The large glass surface area, spacious cab, combined with the rear-view camera, provides an extraordinary view of the 950E's surroundings.

### 5 TOUGHER BOOM AND ARM

The 950E features a tougher, reinforced heavy duty boom and arm built from high-strength tensile steel, with castings and forgings in high stress areas for heavy-duty performance and maximum uptime. We also use over-sized pins to allow the 950E, not just to work harder, but to work harder for longer. Our confidence in our machines is underlined by one of the most comprehensive warranties in the industry.

### 6 SIMPLY MULTIFUNCTIONAL

Switching attachments like buckets, breakers and shears can be time consuming and hazardous. We've made it fast, safe and simple with LiuGong's quick coupler and powerlatch tilt coupler. These are perfectly matched to a range of genuine LiuGong attachments including; buckets and breakers which can be changed from the seat of the cab in less than a minute, quick, safe and easy.

### 7 SIMPLER TO DO THE JOB RIGHT

Six selectable work modes equip even the newest operator with the skills of an expert, allowing them to perfectly match machine performance with the job, whatever that job may be.



### 8 FAST CYCLE TIMES

High hydraulic flow and swing speeds combine to ensure fast cycle times on tasks such as truck loading, digging, trenching and backfilling.



## JOBSITE FACT:ANYTIME

**6000** hours registered and still working hard.  
Tapegyseg Co. Hungary

"We use our LiuGong excavator for breaking down large stone and concrete sections. In two years we have not had a problem and our machines are working 10-11 hours a day, six days a week."

## JOBSITE FACT:ANYWHERE!

**-49°C**  
Temperatures drop but the work rate stays high.

LiuGong Excavators played a key part in supporting China's Polar Exploration team. Extreme temperatures, high altitudes, strong winds and intense ultraviolet light made the Antarctic an extremely tough test environment.

## TOUGH JUDGES

Operators are tough judges. They know what they like and what they don't. We've talked, we've listened and we've delivered a no-nonsense excavator that will do everything the operator wants and needs it to do. Job done? Judge for yourself.

**TOUGH EQUIPMENT**  
**40,000** Excavators currently in the field.  
Over **1/2 BILLION** productive hours worked.





# POWER TO GET THE TOUGHEST JOBS DONE RIGHT

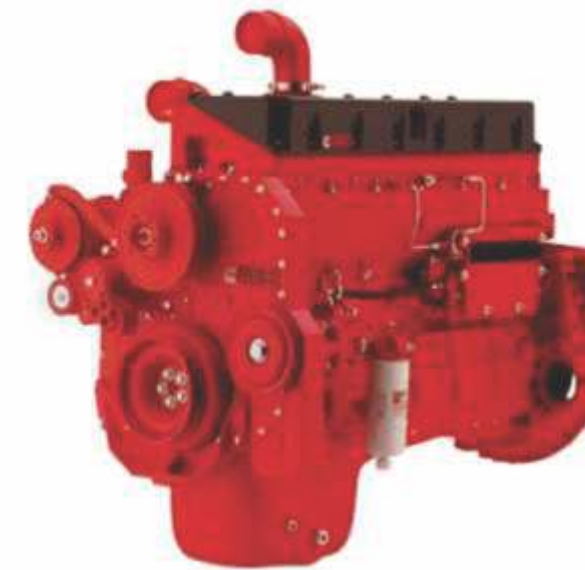
Fit for purpose is about giving your operators efficient and intelligent power when they need it, with control and precision. That's what we do.

## POWER WITHOUT COMPROMISE.

The 950E is powered by the latest Cummins QSM11 engine with a gross power of 375hp @ 2,000 rpm in compliance with EU Stage IIIA emission standards.

The compact QSM11 delivers unmatched and dependable power in its class yet it produces virtually zero emissions.

The engine utilizes a precise fuel injection system, turbo charger and air-to-air intercooler along with electronic engine controls to optimize machine performance. It's powerful. It's responsive. It tackles the toughest jobs without being thirsty for fuel, but above all, it's a joy to operate.



## INTELLIGENT POWER CONTROL

The 950E's advanced Intelligent Power Control (IPC) system intelligently delivers the power you need – when you need it.

This new generation computer-aided IPC system allows the 950E's mechanical, electrical and hydraulic systems to work together in perfect harmony and helps even novice operators get more from the machine. An improved pump system delivers efficient oil output under lower engine speeds, resulting in fuel efficiency and reduced noise levels.

## ADVANCED HYDRAULIC SYSTEM

LiuGong's advanced hydraulic system, regenerates oil in the cylinders more efficiently reducing heat, increasing fuel efficiency and improving cycle times.

The hydraulic system is highly effective in delivering power and precise control to where the operator really needs it, making even the toughest job simple.



## SMART FUEL ECONOMY

The intelligent combination of powerful digging force, swing torque and lifting performance make the most of every drop of fuel. The 950E maximizes fuel economy by intelligently regulating its idle speed by the second.



**1 second:** If no hydraulic request signal detected from the joystick, the engine speed is automatically dropped by 100 RPM.



**3 seconds:** If no activity is detected over three seconds the engine speed will decrease to idle.

In each case, as soon as the system detects the hydraulic signal once more, the engine will immediately return to the previous throttle speed setting.



# DAILY CHECKS AND MAINTENANCE SHOULDN'T BE TOUGH

LiuGong excavators have been **specifically designed** for easy service and maintenance in even the most remote and harsh environments. If servicing is easy, it gets done.

## PRACTICAL SERVICING

Smart and effective design makes service and maintenance fast and simple – that's good news for operators who work in some of the toughest places on the planet. Handrails are fitted as standard, enabling safe and easy access to the upper structure for easy engine service and maintenance.

## ON BOARD MONITORING

With onboard monitoring, the operator can check the machine's vital signs without leaving his seat. Using the LCD display, the operator can easily check oil temperatures and pressure levels, receive service interval alerts and access other information that contributes to simple maintenance and servicing of the machine.



## EASILY ACCESSIBLE SERVICE POINTS MAKE DAILY CHECKS FAST AND EFFECTIVE

- Easily visible hydraulic oil level gauge
- Accessible, grouped filters
- Easy to replace A/C filter next to the cab door
- Maintenance free air filter

# DESIGNED TO MAKE TOUGH WORK EASY ON THE OPERATOR

Climb into the cab of the 950E and you can see that it has been designed by someone who has operated a machine in really tough conditions.



## ADVANCED CLIMATE CONTROL

An advanced climate control system creates the right environment in any weather.

## LARGE LCD MONITOR

The easy-to-read, full-color LCD monitor displays all the critical information your operator needs, including working mode, hydraulic oil temperature, hydraulic pressure and service intervals.



For a start, it's safe and easy to get in and out of.

Trips and slips account for the majority of accidents onsite. Well-placed door handles, safety rails and anti-slip tape on the upper part of the machine make it easier and safer for operators to enter and exit the cab in all weathers and conditions.

Inside, the cab is secure and protected with space to work and excellent 360 degree views of the site.

The controls are where the operator needs them to be. They are easy to see, easy to reach and easy to handle.

The multi-adjustable air-suspension seats are comfortable and designed to keep the operator fresh and alert.

The cab is sound proofed, vibration protected and well ventilated. It has advanced climate control to handle the changing seasons and is completely sealed to prevent dust contamination.

## WE PUT OPERATORS FIRST

It makes good business sense to give operators the very best working environment – a comfortable operator is a productive operator. The 950E keeps operators safer, more alert and more productive.

Smart additions such as; rear view camera, heated seats, refrigerator or personal belonging compartment and an iPod/AUX connection combine to create the best environment – for the best operators.



# SPECIFICATIONS



## OPERATING WEIGHT 48,300 kg

Operating weight includes coolant, lubricants, full fuel tank, cab, standard shoes, boom, arm, bucket and operator 75 kg.

## BUCKET CAPACITY 2.6- 3.2 m<sup>3</sup>

## ENGINE

### Description

Cummins EPA Tier 3 / EU Stage IIIA, inline 6-cylinder, turbocharger, electronically controlled direct injection.  
Air cleaner: Cummins direct flow air filter.  
Cooling system: Charge air cooler

|                     |                     |
|---------------------|---------------------|
| Emission rating     | Tier 3 / Stage IIIA |
| Engine manufacturer | Cummins             |
| Engine model        | QSM 11              |
| Aspiration          | Turbocharged        |
| Charged air cooling | Aftercooler         |
| Cooling fan drive   | Hydraulic           |
| Displacement        | 10.8 L              |
| Rated speed         | 2,000 rpm           |
| Engine output - net | 375 hp              |
| Maximum torque      | 1,898 N·m@1,400rpm  |
| Bore x Stroke       | 125 x 147 mm        |

## UNDERCARRIAGE

|                            |        |
|----------------------------|--------|
| Track shoe each side       | 51     |
| Link pitch                 | 216 mm |
| Shoe width, triple grouser | 600    |
| Bottom rollers each side   | 9      |
| Top rollers each side      | 2      |

## SWING SYSTEM

### Description

Planetary gear reduction driven by high torque axial piston motor, with oil disk brake. Swing parking brake resets within five seconds after swing pilot controls return to neutral.

|              |             |
|--------------|-------------|
| Swing speed  | 8.5 rpm     |
| Swing torque | 165,300 rpm |

## HYDRAULIC SYSTEM

### Main pump

|              |  |
|--------------|--|
| Type         | Two variable displacement piston pumps |
| Maximum flow | 2 x 380 L/min                          |

### Pilot pump

|              |            |
|--------------|------------|
| Type         | Gear pump  |
| Maximum flow | 28.5 L/min |

### Relief valve setting

|                |          |
|----------------|----------|
| Implement      | 34.3 MPa |
| Travel circuit | 32.3 MPa |
| Slew circuit   | 28 MPa   |
| Pilot circuit  | 3.9 MPa  |

### Hydraulic cylinders

|                                 |                 |
|---------------------------------|-----------------|
| Boom Cylinder – Bore x Stroke   | Ø165 x 1,560 mm |
| Arm Cylinder – Bore x Stroke    | Ø190 x 1,980 mm |
| Bucket Cylinder – Bore x Stroke | Ø170 x 1,260 mm |

## ELECTRIC SYSTEM

|                |               |
|----------------|---------------|
| System Voltage | 24 V          |
| Batteries      | 2 x 12 V      |
| Alternator     | 24 V - 70 A   |
| Start motor    | 24 V - 7.5 kW |

## SERVICE CAPACITIES

|                        |           |
|------------------------|-----------|
| Fuel tank              | 650 L     |
| Engine oil             | 37.8 L    |
| Final drive (each)     | 15 L      |
| Swing drive            | 2 x 5.3 L |
| Cooling system         | 50 L      |
| Hydraulic reservoir    | 290 L     |
| Hydraulic system total | 540 L     |

## SOUND PERFORMANCE

|                                       |           |
|---------------------------------------|-----------|
| Interior Sound Power Level (ISO 6396) | 77 dB(A)  |
| Exterior Sound Power Level (ISO 6395) | 108 dB(A) |

## DRIVE AND BRAKES

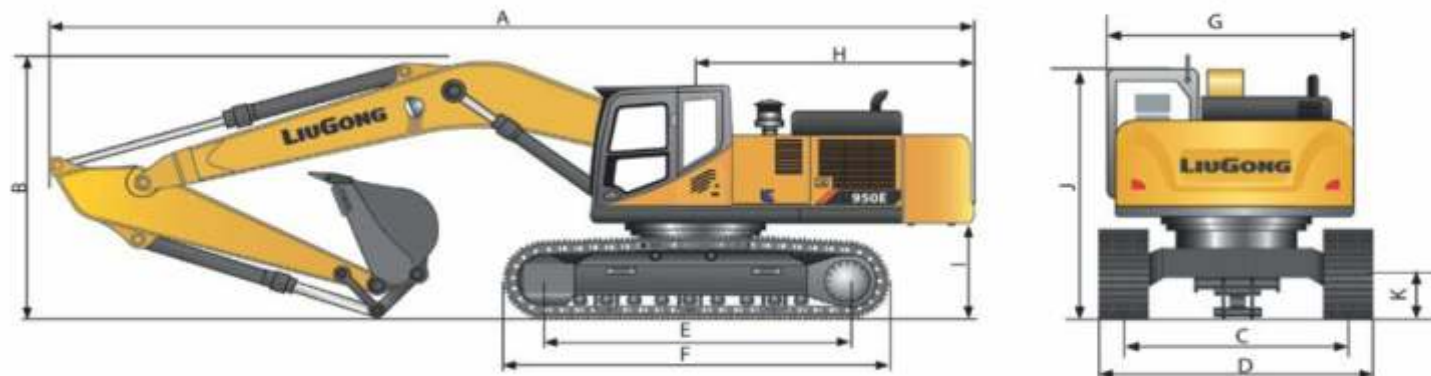
### Description

2-speed axial piston motors with oil disk brakes. Steering controlled by two hand levers with pedals.

|                   |                                 |
|-------------------|---------------------------------|
| Max. travel speed | High: 5.5 km/h<br>Low: 3.3 km/h |
| Gradeability      | 35°/70%                         |
| Max. drawbar pull | 386 kN                          |



# 950E SPECIFICATIONS. >>>



## DIMENSIONS

|                                    |           |
|------------------------------------|-----------|
| Boom                               | 6,500 mm  |
| Arm Options                        | 2,550 mm  |
| A Shipping Length                  | 11,515 mm |
| B Shipping Height – Top of Boom    | 3,810 mm  |
| C Track Gauge                      | 2,740 mm  |
| D Undercarriage Width              | 3,340 mm  |
| E Length to Center of Rollers      | 4,257 mm  |
| F Track Length                     | 5,256 mm  |
| G Overall Width of Upper Structure | 3,180 mm  |
| H Tail Swing Radius                | 3,627 mm  |
| I Counterweight Ground Clearance   | 1,324 mm  |
| J Overall Height of Cab            | 3,550 mm  |
| K Min. Ground Clearance            | 532 mm    |
| Track Shoe Width                   | 600 mm    |

## BUCKET SELECTION GUIDE

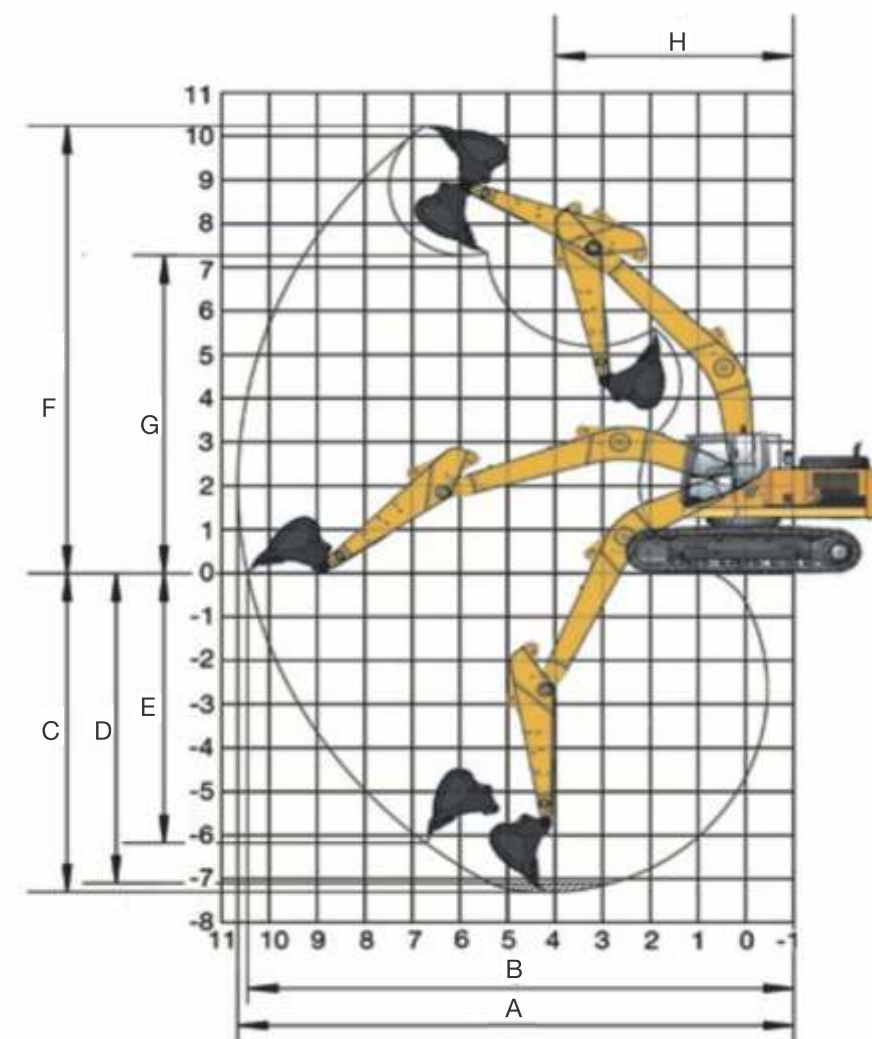
| Bucket type | Capacity           | Cutting width | Weight   | Teeth pcs | 6.5 m HD Boom |  |
|-------------|--------------------|---------------|----------|-----------|---------------|--|
|             |                    |               |          |           | 2.55 m Arm    |  |
| G.P         | 3.2 m <sup>3</sup> | 1,900 mm      | 2,837 kg | 6         | C             |  |
| HD Bucket   | 2.6 m <sup>3</sup> | 1,640 mm      | 2,435 kg | 5         | D             |  |

The recommendations are given as a guide only, based on typical operation conditions. Bucket capacity based on ISO 7451, heaped material with a 1:1 angle of repose.

Maximum material density:  
 A. 1,200-1,300 kg/m<sup>3</sup> : Coal, Caliche, Shale  
 B. 1,400-1,600 kg/m<sup>3</sup> : Wet earth and clay, limestone, sandstone  
 C. 1,700-1,800 kg/m<sup>3</sup> : Granite, wet sand, well blasted rock  
 D. 1,900 kg/m<sup>3</sup> : Wet mud, Iron ore  
 NA. Not applicable

## MACHINE WEIGHTS AND GROUND PRESSURE

|   |           |               |          |
|---|-----------|---------------|----------|
| Operating weight  | 48,300 kg | Overall width | 3,340 mm |
| 6.5 m boom/2.55m arm/3.2 m <sup>3</sup> bucket/10,800 kg counter weight/600 mm shoe width |           |               |          |



## WORKING RANGE

|  |                    |
|--|--------------------|
| Boom Length                              | 6,500 mm           |
| Arm Length                               | 2,550 mm           |
| A. Max. Digging Reach                    | 10,625 mm          |
| B. Max. Digging Reach on Ground          | 10,388 mm          |
| C. Max. Digging Depth                    | 6,521 mm           |
| D. Max. Digging Depth, 2.44 m (8') level | 6,337 mm           |
| E. Max. Vertical Wall Digging Depth      | 5,204 mm           |
| F. Max. Cutting Height                   | 9,977 mm           |
| G. Max. Dumping Height                   | 7,038 mm           |
| H. Min. Front Swing Radius               | 4,645 mm           |
| Bucket Digging Force (ISO)               | 265/280 kN         |
| Arm Digging Force (ISO)                  | 255/270 kN         |
| Bucket Capacity                          | 3.2 m <sup>3</sup> |