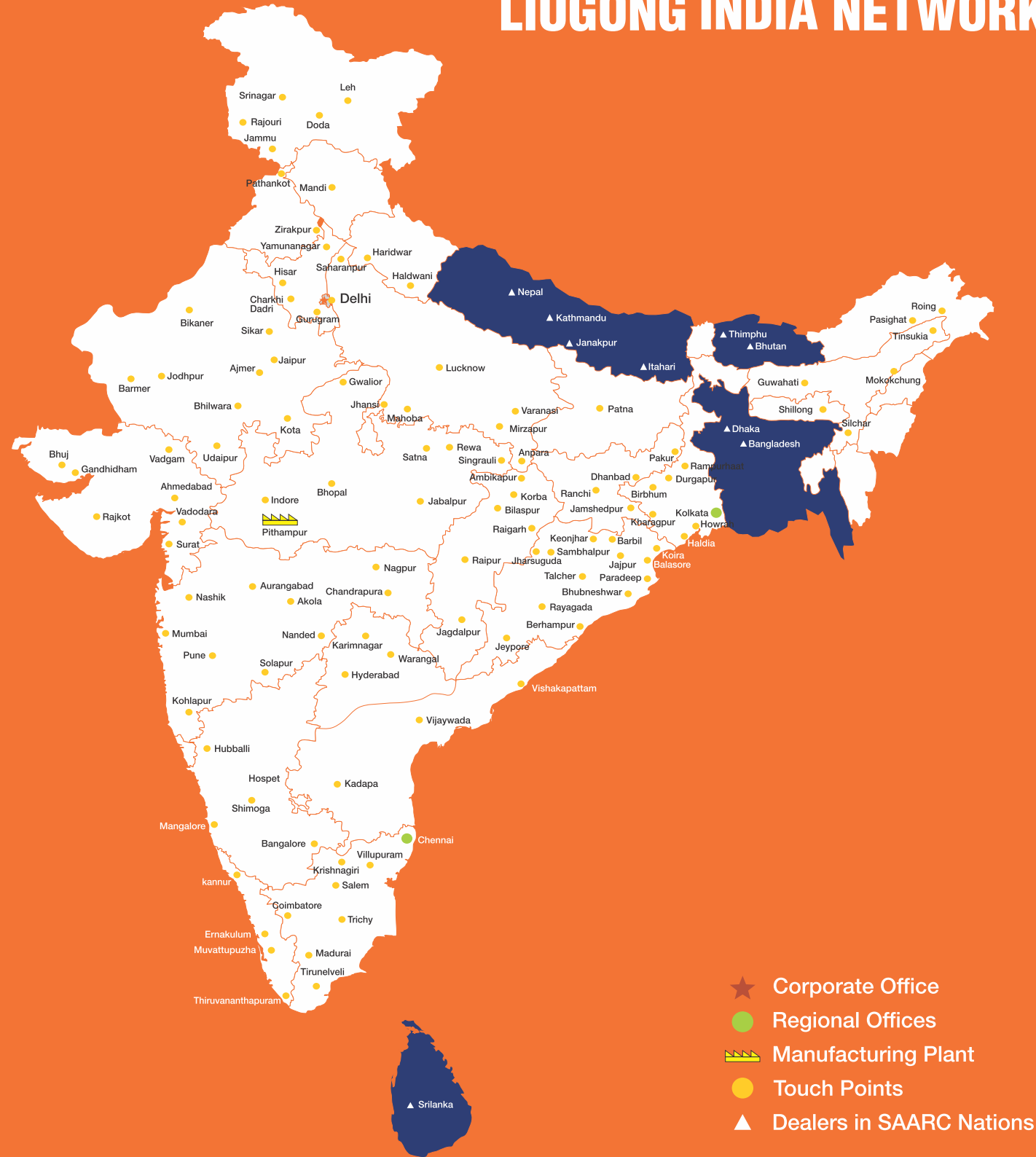


LIUGONG INDIA NETWORK

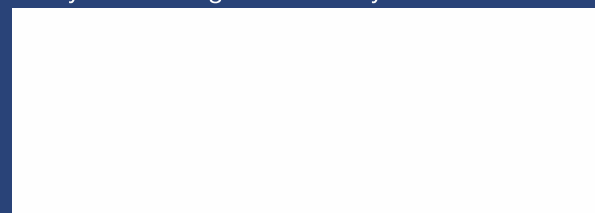


- ★ Corporate Office
- Regional Offices
- 🏭 Manufacturing Plant
- Touch Points
- ▲ Dealers in SAARC Nations



LIUGONG CARE
1800 1033 852

Always a LiuGong dealer near you.



Corporate Office:
 101, Okhla Phase III, New Delhi- 110020, Tel: 011-47272200
 india@liugong.com

Manufacturing Plant:
 Plot No. 163, Industrial Area, Sector-III, Pithampur
 Dist.- Dhar, Madhya Pradesh- 454774, Tel: 07292-416700

www.liugong.com

Like and follow us:



11/2024 LIPL

Engine
Gross Power
Bucket Capacity
Digging Depth
Operating Weight
Cabin

Cummins 6BT5.9
 140 hp @ 2,000 rpm
 0.95 m³ HD/ 1.0 m³ GP
 5,970 mm
 21,700 kg
 Air Conditioned

922E α EXCAVATOR

TOUGH WORLD. TOUGH EQUIPMENT.

The Liugong series of logos herein, including but not limited to word marks, device marks, letter of alphabet marks and combination marks, as the registered trademarks of Guangxi Liugong Group Co., Ltd. are used by Guangxi Liugong Machinery Co., Ltd. with legal permission, and shall not be used without permission. Specifications and designs are subject to change without notice. Machines shown may include optional equipment and may not include all standard equipment.

922E α SPECIFICATIONS >>>



ENGINE

Make	CUMMINS
Engine Model	6BT5.9
Gross Power	140 hp @ 2,000 rpm
Peak Torque	571 N·m @ 1,300 rpm
Displacement	5.9 L
Aspiration	Turbocharged

HYDRAULIC SYSTEM

Main Pump Flow	2x224 LPM
Pilot Pump Flow	19.5 LPM
Relief Valve Setting	
Implement Circuit	34.3/37.3 MPa
Travel Circuit	34.3 MPa
Swing Circuit	28.5 MPa
Pilot Circuit	3.9 MPa

SWING SYSTEM

Swing Speed	12 rpm
Swing Torque	68591 N·m
Swing Motor	Axial Piston Motor
Swing Reduction	Planetary Gear
Swing Bearing	Lubrication Grease Bathed

DRIVE SYSTEM

Gradeability	(35°) 70%
Max. Drawbar Pull	189 kN
Drive Motor	Axial Piston Motor
Drive Reduction	Planetary Gear

BUCKETS

HD Bucket	0.95 m ³
GP Bucket	1.0 m ³

UNDERCARRIAGE

Track Shoe Each Side	46
Track Guard	1
Track Shoe Width (Triple Grouser)	600 mm
Bottom Rollers Each Side	7
Top Rollers Each Side	2

SERVICE CAPACITIES

Fuel Tank	420 L
Engine Oil	20 L
Swing Drive	4.6 L
Hydraulic Tank	128 L
Travel Device	5 Lx2

ELECTRICAL SYSTEM

Voltage	24 V
Working Lights	5

OPTIONAL

LC Configuration	
Operating Weight	22,000 kg
Undercarriage Length	4250 mm
Track Shoe Width (Triple Grouser)	600 mm
Track Shoe (Each Side)	47
Bottom Roller (Each Side)	8
Top Cabin Guard	2
RB Pipeline	
I-Link (GPS)	

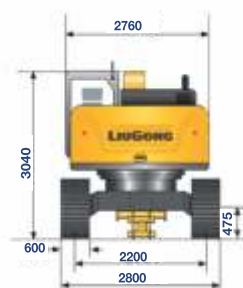
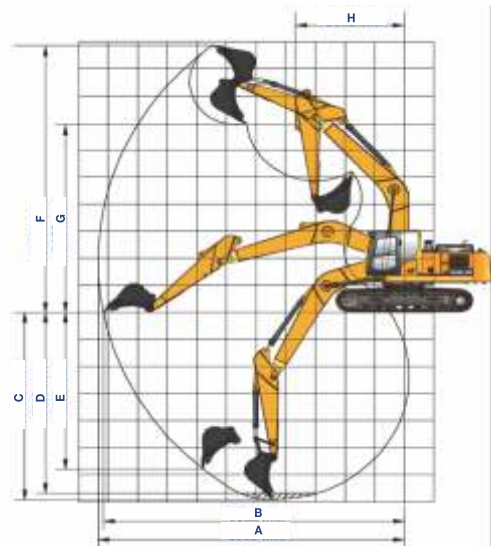
OPERATING WEIGHT

Operating Weight	21,700 kg
Shoe Ground Pressure	48 kPa

WORKING RANGE

Boom Length	5,710 mm
Arm Length	2,200 / 2,400 mm
A Max. Digging Radius	9,280 / 9,509 mm
B Max. Ground Digging Radius	9,090 / 9,322 mm
C Max. Digging Depth	5,970 / 6,098 mm
D Max. Leveling Depth (2.5m on Ground level)	5,730 / 5,886 mm
E Max. Vertical Digging Depth	4,665 / 4,758 mm
F Max. Cutting Height	9,645 / 9,942 mm
G Max. Dumping Height	6,945 / 7,163 mm
H Min. Front Swing Radius	3,335 / 3,082 mm
Max. Bucket Digging Force (ISO)	158 kN
Max. Arm Digging Force (ISO)	134/125 kN

WORKING DIMENSIONS (Reference Bucket - 0.95 m³)



Lifting capacity at the arm end without bucket. For lifting capacity including bucket, weight of the bucket or the bucket with quick coupler must be Deducted from the lifting capacities.

Lifting capacities are based on the machine standing on a firm, uniform supporting surface.



Rating over - front (CF) Rating over - side (Cs)

- Do not attempt to lift or hold and load that is greater than these rated values at their specified load radius and height. Weight of all accessories must be deducted from the above lifting capacities.
- The rated loads are in compliance with iso 10567 hydraulic excavator lift capacity rating standard. They do not exceed 80% of hydraulic lifting capacity or 75% tipping load.
- Ratings at bucket lift hook.
- Lifting capacities are based on machine standing on level, firm and uniform ground.
- *indicates the load is limited by hydraulic capacity rather than tipping capacity.
- Operator should be fully acquainted with the operator's and maintenance instructions before operating this machine and rules for the safe operation of equipment should be adhered to at all times.

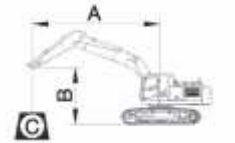
LIFTING CAPACITY (METRIC)

922E α with 600 mm shoes, 2,200 mm arm

A: Load radius
B: Load point height
C: Lifting capacity
Cf: Rating over front
Cs: Rating over side

Conditions

Boom length: 5,710 mm
Arm length: 2,200 mm
Bucket: iso 0.95 m³
Counter weight: 3,600 kg
Shoes: 600 mm
Unit:kg



Load Point Height B	Load Radius A												MAX REACH			
	2m		3m		4m		5m		6m		7m		CAPACITY		DISTANCE	
	Cs	Cf	Cs	Cf	Cs	Cf	Cs	Cf	Cs	Cf	Cs	Cf	Cs	Cf	A(m)	
6 m	kg							*5569	*5569	*5456	4911					
5 m	kg					*6897	*6897	*6124	*6124	*5703	4839	*5552	3841	*5527	*4226	6.60
4 m	kg					*8430	*8299	*6935	6080	*6108	4720	*5727	3792	5286	3419	7.50
3 m	kg							*7853	5837	*6684	4582	5793	3717	5035	3427	7.70
2 m	kg							*8686	5624	7108	4451	5707	3640	4894	3145	7.80
1 m	kg							9115	5476	6990	4348	5634	3574	4855	3109	7.80
0 m	kg					*10961	7269	9020	5396	6915	4281	5587	3532	5005	3192	7.60
-1	kg			*7540	*7540	*11928	7279	8991	5371	6885	4255	5576	3522	5281	3354	7.30
-2	kg	*9107	*9107	11433	*12941	*11421	7332	9018	5394	6904	4272			5835	3682	6.80
-3	kg			11574	*12941	*10525	7433	*8610	5469	6941	4355			*6752	4270	6.10
-4	kg			*11016	*11016	*8954	7609	*7045	5639					*6821	5504	5.10

Buckets	Bucket Capacity (Heaped m ³)	Width(mm)	Weight (kg)	Material Density (kg/m ³)					
				800	1000	1200	1400	1600	1800
Heavy Duty (HD)	0.95	1170	1026						
General Purpose (GP)	1.0	1260	944						
Coal Bucket	1.5	1875	673						

*Available on special Demand

Notes

LiuGong standard and optional equipment may vary from region to region. Please consult your LiuGong dealer for information specific to your area.

All parameters within (+) 2.5% of the specified values. Specification are subject to change without notice
LiuGong standard and optional equipment may vary from region to region. Please consult your LiuGong dealer for information specific to your area.

* Items shown as Optional. Availability on demand