



Engine	Cummins 6BTAA5.9
Rated Power	112 kW (150 hp / 152 ps) @ 1,950 rpm
Net Power	102 kW (137 hp / 139 ps) @ 1,950 rpm
Maximum Digging Depth	10,890 mm
Standard Bucket Capacity	0.45 m ³
Operating Weight	29,000 kg

922E EXCAVATOR

922E SPECIFICATIONS >>>

ENGINE

Emission Regulation	Tier 2 / Stage II
Manufacturer	Cummins
Model	6BTAA5.9
Rated Power	112 kW (150 hp / 152 ps) @ 1,950 rpm
Net Power	102 kW (137 hp / 139 ps) @ 1,950 rpm
Peak Torque	614 N·m @ 1,500 rpm
Number of Cylinders	6
Displacement	5.9 L

UNDERCARRIAGE

Shoe Width	1,285 mm
Number of Shoes per Side	40

BOOM & ARM

Boom Length	8,500 mm
Arm Length	6,400 mm

BUCKET PERFORMANCE

Std. Bucket Heaped Capacity (Referenced)	0.45 m ³
--	---------------------

TRACK DRIVE

Maximum Travel Speed	2.5 km/h
Drawbar Pull	229 kN

SERVICE CAPACITIES

Fuel Tank	635 L
Engine Oil	25 L
Cooling System	25 L
Hydraulic Reservoir	210 L
Hydraulic System Total	330 L

HYDRAULIC SYSTEM

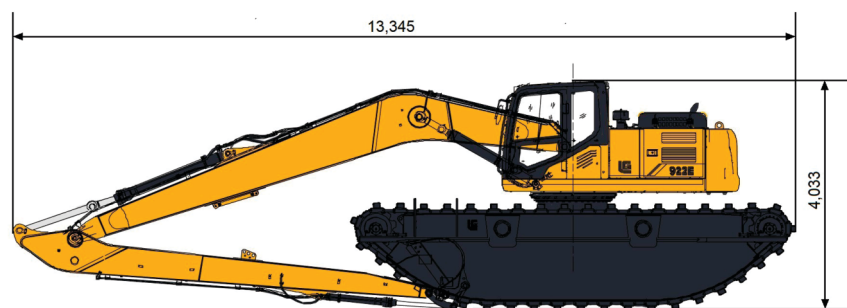
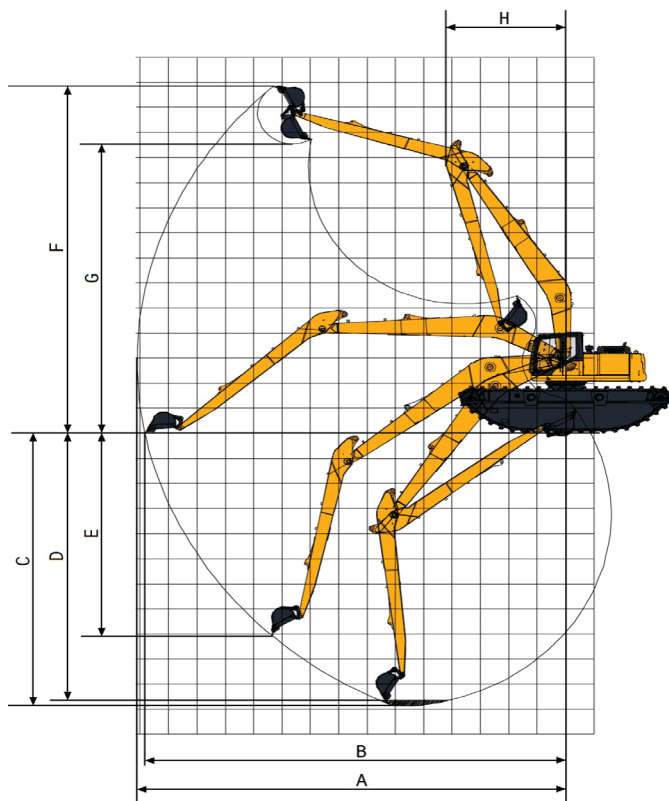
Main Pumps Total Flow	448 L/min
Relief Pressure, main	34.3 MPa

SWING SYSTEM

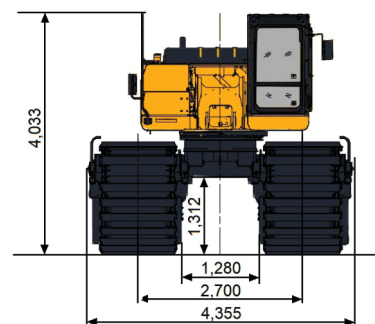
Swing Speed	10.5 rpm
-------------	----------

WORKING RANGE

A. Max. Digging Reach	15,110 mm
B. Max. Digging Reach on Ground	14,830 mm
C. Max. Digging Depth	10,890 mm
D. Max. Digging Depth, 2.44 m (8') level	10,635 mm
E. Max. Vertical Wall Digging Depth	8,040 mm
F. Max. Cutting Height	13,845 mm
G. Max. Dumping Height	11,540 mm
H. Min. Front Swing Radius	4,200 mm
Bucket Digging Force (ISO)	69 kN
Arm Digging Force (ISO)	54 kN



Unit: mm



Corporate office
LiuGong India Pvt. Ltd.
 101, Okhla Industrial Estate, Phase III
 New Delhi - 110020
 Tel.: 011- 47272200
 www.liugong.com
 india@liugong.com

Plant Address:
 Plot No. 163, Industrial Area,
 Sector - III, Pithampur,
 Dist. - Dhar, Madhya Pradesh - 454774
 Tel.: 07292-416700

Specifications and designs are subject to change without notice. Machines shown may include optional equipment.

Mera LiuGong Mera Vishwas
1800 1033 852