



Engine	Yuchai
Gross Power	225 HP (168 kW)
Operating Weight	18,350 Kg
Payload Capacity	5,500 Kg
Standard Bucket	3.5 m <sup>3</sup>

# 856H <sup>MAX</sup>

## WHEEL LOADER

TOUGH WORLD. TOUGH EQUIPMENT.

856H MAX



# MAXIMIZE YOUR PROFITS



## POWERFUL & FUEL EFFICIENT ENGINE



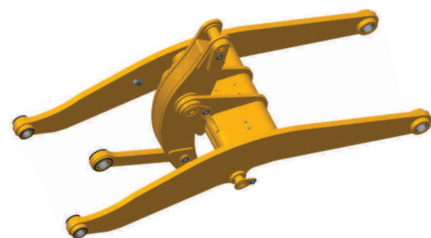
Yuchai YCK09230-B460 6 Cylinder, CRDI, Turbocharged, Intercooled Engine to match perfectly with Powertrain of Liugong CEV Stage IV Wheel Loaders Leading to High Performance

## HEAVY DUTY REINFORCED BUCKET CRUSHER 3.5 m<sup>3</sup> | COAL 5.5 m<sup>3</sup>



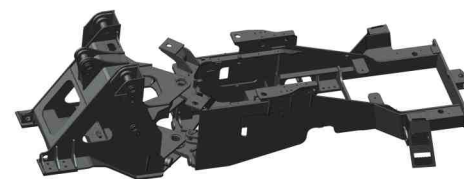
High tensile structural steel built with high quality ensures durability. Redesigned profile of buckets to achieve higher fill factor

## HEAVY DUTY Z-BAR LINKAGE



Optimized Z-bar geometry achieves superior digging force, high bucket breakout forces and maximum angle rollback for stable transport of material with minimal spillage

## TOUGH & RELIABLE STRUCTURES



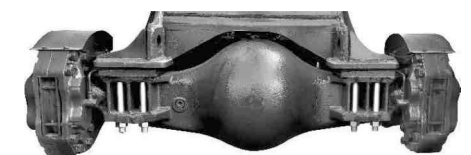
In house manufactured heavy duty front frame and rear frame are re-designed in a manner to withstand toughest conditions and provide maximum stability during an operation

## TRUSTED & RELIABLE LIUGONG TRANSMISSION



Proven & tested Liugong transmission with gear powershift of 2 forward and 1 reverse performs great speed acceleration even on slopes. Requires less maintenance

## HEAVY DUTY LIUGONG AXLE



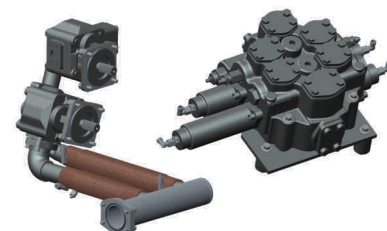
Boost your performance by Liugong Dry Type axle with limited slip differential which ensures the optimum performance even in the toughest terrain with toughest load

## RADIAL TIRE



Radial tires of 23.5 R25 size provide high stability of work and better traction to ensure the optimum output at any field work. It also improves the tire life

## WORLD CLASS COMPONENTS



High reliable components and advance hydraulic system organizes the mechanical, electrical and hydraulic systems to work in perfect harmony. Delivers high efficiency with less maintenance to work

## OPERATOR COMFORT



Ergonomically designed cab with air conditioner, adjustable seat, music system creates a comfortable environment for operators at various working conditions. This reduces operator's fatigue and optimize the work

## MULTI - FUNCTION DASHBOARD



Liugong large central instrument panel covers all the warning alerts, monitor, your work, performance and delivers accurate data on real time.

## OPERATOR SAFETY



Ergonomically designed cabin has four working cab lights, standard front guard, wiper, single joystick operated hydraulics, Liugong I-link, laminated front with Improved visibility prioritize the operator safety and enhances productivity

# 856H<sup>MAX</sup> SPECIFICATIONS >>>



## OPERATING WEIGHT 18350 Kg

### ENGINE

YuChai 6 cylinder, CRDi, Turbocharged, Intercooled Engine Designed and Developed for LiuGong Wheel Loaders.

Manufacturer	Yuchai
Model	YCK09230-B460
Emission Regulation	CEV Stage IV
Gross Power	225 HP (168 kW) @ 2000 rpm
Peak Torque	1200 N-m @ 1300 rpm
Displacement	9.41 L
Aspiration	Turbocharged, Intercooled
Number of Cylinders	6

### BUCKET RANGES

Heavy duty big buckets are designed to offer high output, breakout force and fill factor.

Coal	5.5 m <sup>3</sup>
General Purpose Bucket	3.5 m <sup>3</sup>
Rock Bucket	2.8 m <sup>3</sup>

### TRANSMISSION

Make	LiuGong
Type	Powershift
Torque Converter	Twin Turbine, Four Members
Number of Speed	Forward 2 / Reverse 1
Forward Speed F1/F2	12 / 37 Km/hr
Reverse R1	17 Km/hr

### AXLES

Make	LiuGong
Type	Dry Type Axle (Planetary Hub Reduction)
Axle Oscillation	Front Fixed and Rear ±10°

### TIRES

Tire Size	23.5-R25
Type	Radial and Tubeless

### BRAKE SYSTEM

Service Brake	4 Wheel applied air over hydraulic with Independent circuit for front & rear axle
Parking Brake	Drum Brake Mechanical Actuation
Secondary Brake	Manually Applied on Low Pressure

### HYDRAULIC SYSTEM

Efficient and reliable hydraulics having independent pumps for work implement and steering system generating flow for optimum performance.

Main Pump Type	Gear Pump
Main Relief Pressure	19 MPa
Main Pump Flow	332 LPM
Cycle Time	9.5 Sec
Control	Single Pilot Lever
Cylinders	Double Acting Cylinder

### STEERING SYSTEM

Steering Type	Articulation
Pump Type	Gear Pump
Steering Relief Pressure	21 MPa
Steering System flow	128 LPM
Maximum Articulation Angle	± 38°

### CABIN

Ergonomically designed AC cabin has 4 working cab lights, wipers, adjustable seat, single joystick operated hydraulics with hand rest, music system, cup holder, large instrument panel for - (DEF level gauge, fuel level gauge, turn indicators, engine tachometer, engine coolant temperature gauge, transmission oil temperature gauge various status and warning indicators). LiuGong i-link, removable floor mat, laminated front glass, 02 External side view mirrors and cabin guard. AIS160 Compliant for safety and performance.

### ELECTRICAL SYSTEM

System Voltage	24 V
Battery	12 V x 2

### LOADER PERFORMANCE WITH STANDARD BUCKET 3.5 m<sup>3</sup>

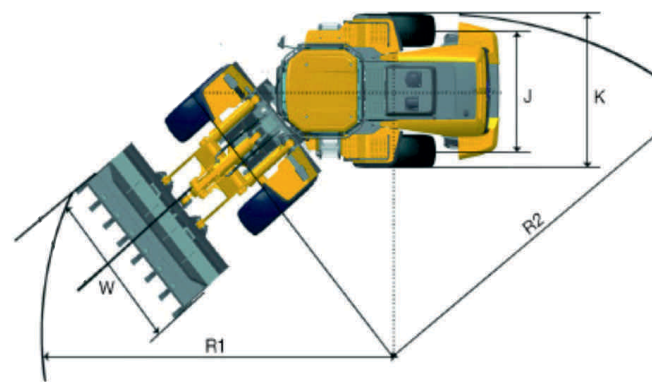
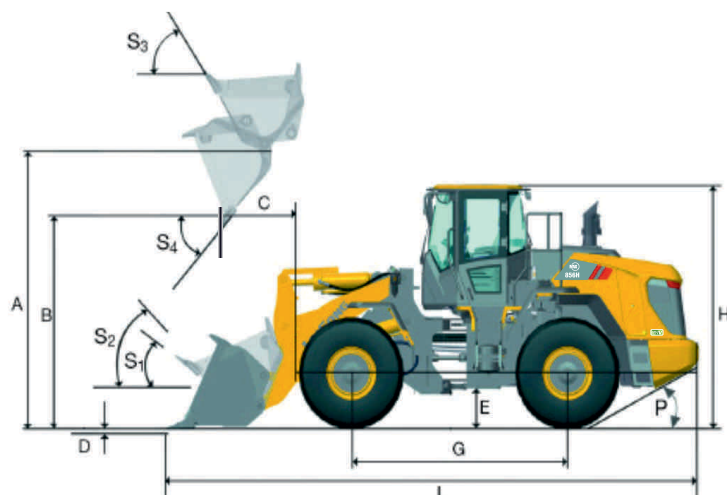
Tipping Load- Straight	15877 kg
Tipping Load- Full Turn	13878 kg
Bucket Breakout Force	175 kN
A-Hinge Pin Height, Fully Raised	4156 mm
B-Dumping Height, Fully Raised	3015 mm
C-Dumping Reach, Fully Raised	1195 mm
D-Max. Digging Depth	50 mm
E-Min. Ground Clearance	423 mm
G-Wheel Base	3320 mm
H-Overall Height ( Top of Cab)	3500 mm
J-Tread Width	2150 mm
K-Overall Width (Outside of Wheel)	2740 mm
L-Overall Length	8370 mm
W-Overall Width (Outside on Bucket)	2970 mm
P-Departure Angle	30°
S1-Bucket Rollback at Ground Level	44°
S2-Bucket Rollback at Carry	49°
S3-Bucket Roll Back at Maximum	62°
S4-Maximum Dump Angle at Full Height	45°
R1-Turning Radius (Outside of Bucket)	6500 mm
R2-Turning Radius (Outside of Rear Wheel)	6000 mm

### SERVICE CAPACITIES

Fuel Tank	280 L
Engine Oil	26 L
Adblue	25 L
Cooling System	50 L
Transmission & Torque Converter	35 L
Hydraulic System	225 L
Axle Oil Each	33 L

### OPTIONAL

- Certified ROPS/FOPS Cabin
- DGMS KIT
- Automatic Centralized Lubrication
- Automatic Fire Suppression System
- Rear View Camera
- Rotary Beacon



All parameters within (±) 2.5% of the specified values. Specification are subject to change without notice  
LiuGong standard and optional equipment may vary from region to region. Please consult your LiuGong dealer for information specific to your area.

**Corporate office**  
**LiuGong India Pvt. Ltd.**  
82, Okhla Industrial Estate, Phase III  
New Delhi- 110020  
Tel.: 011- 47272200  
www.liugong.com  
liugongindia.com

**Plant Address:**  
Plot No. 163, Industrial Area,  
Sector - III, Pithampur,  
Dist. - Dhar, Madhya Pradesh - 454774  
Tel.: 07292-416700

Mera LiuGong Mera Vishwas  
**1800 1033 852**