

LIUGONG



Engine	Weichai WD10G178E25
Gross Power	131 kW (176 hp) @ 1,850 rpm
Net Power	120 kW (163 hp) @ 1,850 rpm
Maximum Torque	830 N·M
Blade Capacity	4.5 m ³
Operating Weight	17,000 Kg

B160C BULLDOZER

TOUGH WORLD. TOUGH EQUIPMENT.

B160C SPECIFICATIONS >>>



ENGINE	
Emission Regulation	Tier 2 / Stage II
Make	Weichai
Model	WD10G178E25
Gross Power	131 kW (176 hp) @ 1,850 rpm
Net Power	120 kW (163 hp) @ 1,850 rpm
Peak Torque	830 N·m
Number of Cylinders	6
Aspiration	Turbocharged
Displacement	9.726 L

TRANSMISSION	
Transmission Type	Power shift
Maximum Travel Speed, fwd	10.6 km/h
Maximum Travel Speed, rev	13.6 km/h
Number of Speeds, fwd	3
Number of Speeds, rev	3

ELECTRICAL SYSTEM	
System Voltage	24 V

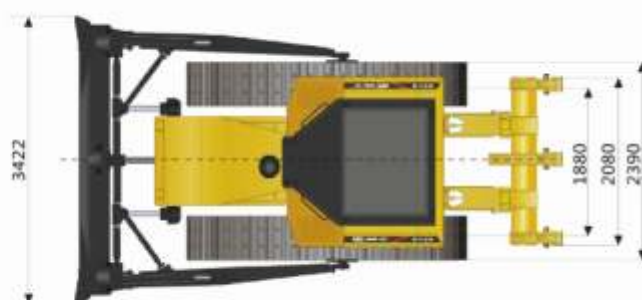
UNDERCARRIAGE	
Shoe Width	510 mm
Number of Shoes per Side	37
Number of Upper Rollers per Side	2
Number of Bottom Rollers per Side	6
Shoe Ground Pressure	67 kPa
Track on Ground	2,430 mm

DIMENSIONS	
Overall Length	6,510 mm
Height to Top of Cab	3,200 mm
Ground Clearance	400 mm

OPERATING WEIGHTS	
Operating Weight	17,000 kg

BLADE PERFORMANCE	
Blade Type (referenced)	Straight
Blade Capacity (referenced)	4.5 m ³
Blade Width	3,388 mm
Blade Height	1,149 mm
Depth below Ground	540 mm
Lift above Ground	1,076 mm
Blade Tilt (left)	445 mm
Blade Tilt (right)	470 mm

SERVICE CAPACITIES	
Fuel Tank	350 L
Engine Oil	24 L
Cooling System	40.5 L
Hydraulic System Total	108 L
Transmission and Torque Converter	122 L
Final Drives, each	66 L



Unit: mm

Corporate office
LiuGong India Pvt. Ltd.
 82, Okhla Industrial Estate, Phase III
 New Delhi- 110020
 Tel.: 011- 47272200
 W: www.liugong.com
 E: india@liugong.com

Plant Address:
 Plot No. 163, Industrial Area,
 Sector - III, Pithampur,
 Dist. - Dhar, Madhya Pradesh - 454774
 Tel.: 07292-416700, Fax: 07292-416701

12/ 2018 Designed by LiuGong India

LiuGong Care
1800 1033 852

Specifications and designs are subject to change without notice. Machines shown may include optional equipment.