



<b>Engine</b>	Chongqing Cummins
<b>Gross Power</b>	243 hp @ 2,000 rpm
<b>Net Power</b>	230 hp @ 2,000 rpm
<b>Maximum Torque</b>	1,050 N □ m
<b>Blade Capacity</b>	7.8 m <sup>3</sup>
<b>Operating Weight</b>	24,540 kg

# B230 BULLDOZER

TOUGH WORLD. TOUGH EQUIPMENT.

# B230 SPECIFICATIONS >>>



ENGINE	
Emission Regulation	BS III
Make	ChongQing Cummins
Model	NT855C280S20
Gross Power	243 hp @ 2,000 rpm
Net Power	230 hp @ 2,000 rpm
Peak Torque	1,050 N · m @ 1,400 rpm
Number of Cylinders	6
Aspiration	Turbo air-to-air after cooled
Displacement	14 L

TRANSMISSION	
Transmission Type	Power shift
Maximum Travel Speed, fwd	11.82 km/h
Maximum Travel Speed, rev	14.3 km/h
Number of Speeds, fwd	3
Number of Speeds, rev	3

ELECTRICAL SYSTEM	
System Voltage	24 V

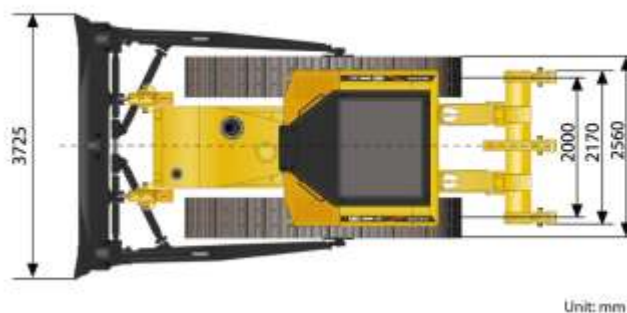
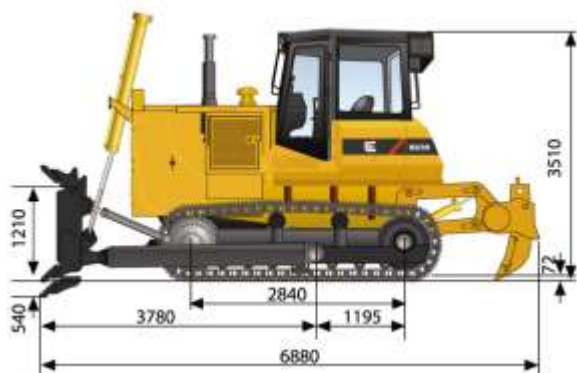
UNDERCARRIAGE	
Shoe Width	560 mm
Number of Shoes per Side	39
Number of Upper Rollers per Side	2
Number of Bottom Rollers per Side	7
Shoe Ground Pressure	83.1 kPa
Track on Ground	2,840 mm

DIMENSIONS	
Overall Length	6,880 mm
Height to Top of Cab	3,510 mm
Ground Clearance	405 mm

OPERATING WEIGHTS	
Operating Weight	24,540 kg

BLADE PERFORMANCE	
Blade Type (referenced)	Straight
Blade Capacity (referenced)	7.8 m <sup>3</sup>
Blade Width	3,725 mm
Blade Height	1,395 mm
Blade Depth below Ground	540 mm
Blade Lift above Ground	1,210 mm
Blade Tilt	735 mm

SERVICE CAPACITIES	
Fuel Tank	480 L
Engine Oil	45 L
Cooling System	79 L
Hydraulic System Total	110 L
Transmission and Torque Converter	122 L
Final Drives, each	82 L



Unit: mm

**Corporate office**  
**LiuGong India Pvt. Ltd.**  
 82, Okhla Industrial Estate, Phase III  
 New Delhi- 110020  
 Tel.: 011- 47272200  
[www.liugong.com](http://www.liugong.com)  
[marketing-india@liugong.com](mailto:marketing-india@liugong.com)

**Plant Address:**  
 Plot No. 163, Industrial Area,  
 Sector - III, Pithampur,  
 Dist. - Dhar, Madhya Pradesh - 454774  
 Tel.: 07292-416700

Specifications and designs are subject to change without notice. Machines shown may include optional equipment.

 **LiuGong Care**  
**1800 1033 852**