



Excellence Series

Engine	Cummins QSM 11
Gross Power	375 hp @ 2,100 rpm
Digging Depth	6,521 mm
Bucket Capacity	2.6 m ³ XD/3.2 m ³ GP
Operating Weight	46,500 Kg
Cabin	Air Conditioned

950E EXCAVATOR

TOUGH WORLD. TOUGH EQUIPMENT.

950E SPECIFICATIONS. >>>



ENGINE

Make	Cummins
Model	QSM11
Gross Power	375 hp @ 2,100 rpm
Peak Torque	1898 N·m @ 1,400 rpm
Number of Cylinders	6
Displacement	10.8 L
Aspiration	Turbocharged CAC

HYDRAULIC SYSTEM

Main Pump Type	Two Variable Displacement Piston Pump
Main Pump Flow	2 x 380 LPM
Pilot Pump Flow	25.5 LPM
Implementation System Pressure	32.3 MPa
Travel System Pressure	32.3 MPa
Swing System Pressure	28 MPa
Pilot System Pressure	3.9 MPa

SWING SYSTEM

Swing Speed	8.5 rpm
Swing Motor	Axial Piston Motor
Swing Reduction	Planetary Gear
Swing Bearing	Lubrication Grease Bathed

TRACK DRIVE

Drive Type	Hydrostatic
Drive Motor	Axial Piston Motor
Drive Reduction	Planetary Gear
Max. Drawbar Pull	386 kN
Travel Speed (High/Low)	(5.5/3.3) Km/h
Gradeability	70% (35°)

UNDERCARRIAGE

Track Shoe Width (Triple Grouser)	600 mm
No. of Track Shoes	51 Each Side
No. of Upper Rollers	2 Each Side
No. of Bottom Rollers	9 Each Side

SERVICE CAPACITIES

Fuel Tank	620 L
Engine Oil	37.8 L
Cooling System	50 L
Hydraulic Oil Tank	290 L
Hydraulic System Total	520 L
Swing Device	5.3 Lx2
Travel Device	15 Lx2

OPTIONAL

RB Pipeline

BUCKETS

Bucket Capacity	2.6 m ³
Heavy Duty	3.2 m ³

OPERATING WEIGHT

Operating Weight	46,500 kg
Shoe Ground Pressure	82.2 kPa

TELEMATICS

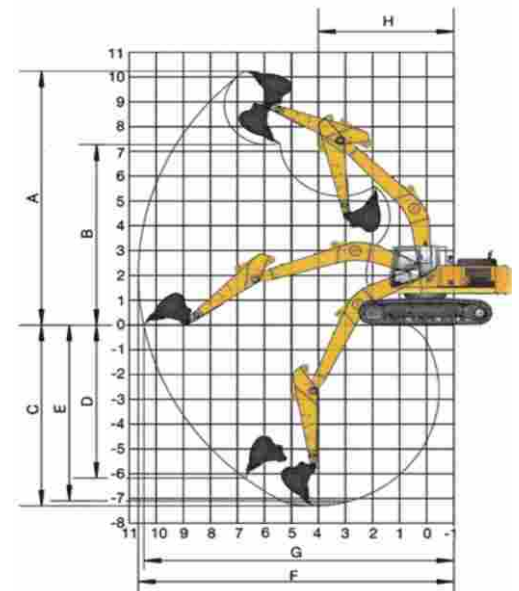
I-Link (GPS)	Available
--------------	-----------

DIMENSIONS

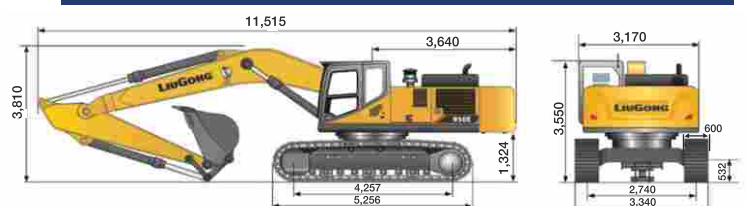
Boom Length	6,500 mm
Arm Length	2,550 mm
A Dig Height	9,977 mm
B Dump Height	7,038 mm
C Dig Depth	6,521 mm
D Dig Depth of Vertical	5,204 mm
E Depth of 8 Bottom	6,337 mm
F Max Reach	10,625 mm
G Reach at Ground Level	10,388 mm
H Min Swing Radius	4,645 mm
ISO Bucket Breakout Force (Normal)	265 kN
ISO Bucket Breakout Force (Power Boost)	280 kN
ISO Arm Breakout Force (Normal)	255 kN
ISO Arm Breakout Force (Power Boost)	270 kN

WORKING DIMENSIONS

(Reference Bucket-3.2 m³)



STATIC DIMENSIONS



Corporate office
LiuGong India Pvt. Ltd.
 82, Okhla Industrial Estate, Phase III
 New Delhi- 110020
 Tel.: 011- 47272200
 www.liugong.com
 india@liugong.com

Plant Address:
 Plot No. 163, Industrial Area,
 Sector - III, Pithampur,
 Dist. - Dhar, Madhya Pradesh - 454774
 Tel.: 07292-416700

Specifications and designs are subject to change without notice. Machines shown may include optional equipment.

Mera LiuGong Mera Vishwas
1800 1033 852