



Excellence Series

Engine	Cummins QSL 9
Gross Power	287 hp @ 2,100 rpm
Net Power	271 hp @ 2,100 rpm
Maximum Digging Depth	6,730mm
Standard Bucket Capacity	1.6 m ³ XD/1.9 m ³ GP
Operating Weight	35,800 kg
Cabin	Air Conditioned

939E EXCAVATOR

TOUGH WORLD. TOUGH EQUIPMENT.

939E SPECIFICATIONS. >>>



ENGINE

Emission Regulation	Tire 3/Stage IIIA
Make	Cummins
Model	QSL9
Gross Output	214 kW (287hp) @ 2,100 rpm
Number of Cylinders	6
Displacement	8.9 L
Aspiration	Turbocharged CAC

NEW GENERATION IPC SYSTEM

The new generation IPC (INTELLIGENT POWER CONTROL) system ensure the mechanical, electrical and hydraulic system work in perfect harmony.

Working Modes	6
---------------	---

HYDRAULIC SYSTEM

Main Pump Type	Two Variable Displacement Piston Pump
Max. Flow	2 x 300 LPM
Pilot Pump	Gear Pump
Implementation System Pressure	34.3/ 37.3 MPa
Travel System Pressure	34.3 MPa
Swing System Pressure	26.2 MPa
Pilot System Pressure	3.9 MPa

SWING SYSTEM

Swing Speed	10 rpm
Swing Motor	Axial Piston Motor
Swing Reduction	Planetary Gear
Swing Bearing	Lubrication Grease Bathed

DRIVE

Drive Method	Hydrostatic
Drive Motor	Axial Piston Motor
Drive Reduction	Planetary Gear
Max. Drawbar Pull	320 Kn (32631 kgf)
Travel Speed (High/Low)	(5.5/3.4) Km/h
Gradeability	70% (35°)
Parking Brake	Multi Wet Disc (SAHR)

UNDERCARRIAGE

Track Shoe Width (Triple Grouser)	600 mm
No.of Shoes Per Size	48
No.of Upper Rollers Per Side	2
No.of Bottom Rollers Per Side	9

SERVICE CAPACITIES

Fuel Tank	620 L
Engine Oil	26 L
Cooling System	35 L
Hydraulic Reservoir	240 L
Hydraulic System Total	450 L
Travel Device	9.5 Lx2

OPERATING WEIGHT

Operating Weight	35,800 kg
Shoe Ground Pressure	66.8 kPa

BUCKETS

Bucket Capacity	1.6 - 1.9 m ³
-----------------	--------------------------

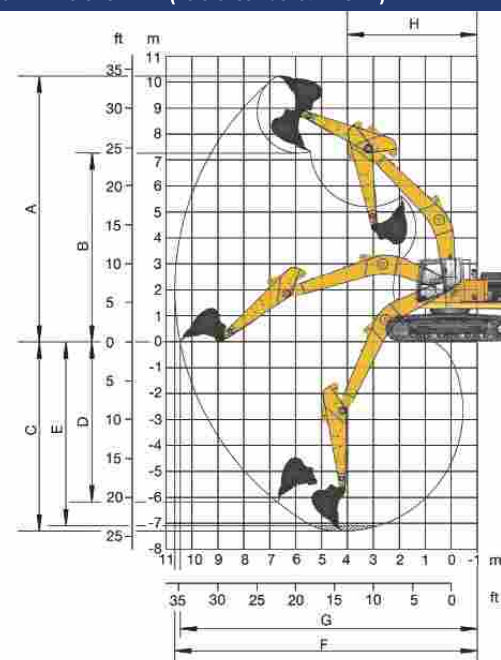
OPTIONAL

RB Pipeline
I-Link (GPS)

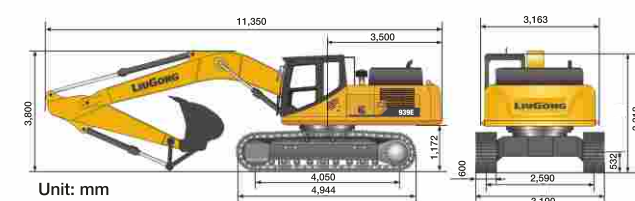
DIMENSIONS

Boom Length	6,400 mm
Arm Length	2,600 mm
Reference Bucket	1.9m ³
A Dig Height	9,830 mm
B Dump Height	6,900 mm
C Dig Depth	6,730 mm
D Dig Depth of Vertical	4,430 mm
E Depth of 8 Bottom	6,530 mm
F Max Reach	10,560 mm
G Reach at Ground Level	10,350 mm
H Min Swing Radius	4,700 mm
ISO Bucket Break Out Force	232 kN
ISO Arm Break Out Force	210 kN

WORKING DIMENSIONS (Reference Bucket - 1.9 m³)



STATIC DIMENSIONS



Corporate office
LiuGong India Pvt. Ltd.
 82, Okhla Industrial Estate, Phase III
 New Delhi- 110020
 Tel.: 011- 47272200
 www.liugong.com
 india@liugong.com

Plant Address:
 Plot No. 163, Industrial Area,
 Sector - III, Pithampur,
 Dist. - Dhar, Madhya Pradesh - 454774
 Tel.: 07292-416700

Specifications and designs are subject to change without notice. Machines shown may include optional equipment.

Mera LiuGong Mera Vishwas
1800 1033 852