

LIUGONG INDIA NETWORK



Mera LiuGong Mera Vishwas
1800 1033 852

Always a LiuGong dealer near you.



Corporate Office:
 82, Okhla Phase III, New Delhi- 110020, Tel: 011-47272200
 india@liugong.com

Manufacturing Plant:
 Plot No. 163, Industrial Area, Sector-III, Pithampur
 Dist.- Dhar, Madhya Pradesh- 454774, Tel: 07292-416700

www.liugong.com

Like and follow us:



08/2021 LIPL

Engine	Cummins QSB7
Gross Power	188 hp @ 2050 rpm
Bucket Capacity	1.35 m ³ XD/1.5 m ³ GP
Digging Depth	6,915 mm
Operating Weight	26,500 kg
Cabin	Air Conditioned

926E XD EXCAVATOR

TOUGH WORLD. TOUGH EQUIPMENT.

The Liugong series of logos herein, including but not limited to word marks, device marks, letter of alphabet marks and combination marks, as the registered trademarks of Guangxi Liugong Group Co., Ltd. are used by Guangxi Liugong Machinery Co., Ltd. with legal permission, and shall not be used without permission. Specifications and designs are subject to change without notice. Machines shown may include optional equipment and may not include all standard equipment.

EXTRA REINFORCED STRUCTURES

Whatever the job, our **New 926E XD** will work smarter and harder to get that job done extracting, breaking and handling materials to reclaiming the site at the end of its life.



HD 1.5m³



XD 1.35m³



1 HEAVY UNDERCARRIAGE

The X frame of the undercarriage is a single plate, bent to contours (in place of welding), built from a special grade of steel which is low in Carbon, high in alloying ingredients. The crawler frames offer greater stability and protection to key components.

2 REINFORCED UPPER STRUCTURE

The central section of the upper structure, which bears the maximum load is a well-engineered h beam, made using thick alloy steel having higher tensile strength-with large cross section and extra reinforcements on both sides, allowing the boom to be mounted centrally. The sides are large, reinforced d section, to ensure it withstands external impact. An additional collision protector on the exterior, improves service life of the platform.

5 XTREME DUTY(XD) BUCKET

The buckets are made using wear resistant plates, for longer life in quarry & mining applications-Hardox has been used on the sides, bottom and the inside of bucket. The buckets have a dual radius profile, for easy penetration and higher bucket fill factor. A unique bolted cutting edge and lip protectors between the teeth, on XD buckets, give that extra edge to take on extreme applications.

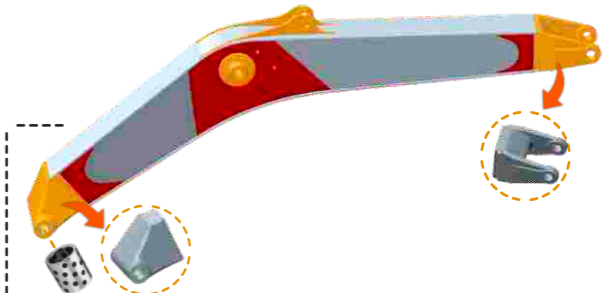
4 XTREME DUTY(XD) ARM

This Arm is newly designed, offering excellent torsional resistance. The arm base plate is a single plate bend to shape for higher durability in tough applications. Angular welding distributes the stress over a larger cross-sectional area. An extra plate is welded on the bottom plate, on which, are welded 3 vertical bars, to prevent damage to the arm. The arm-foot boss is enlarged in shape, to deliver more strength in xtreme duty applications.

3 XTREME DUTY(XD) BOOM

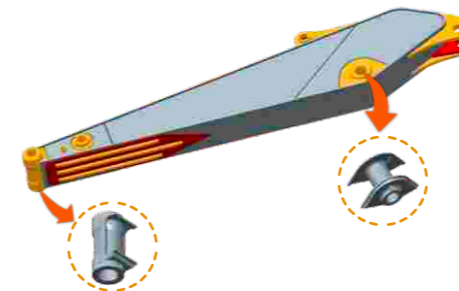
This boom is robotically welded using Single piece top and bottom plates, to ensure best distribution of load throughout the boom structure. The design incorporates large cross-section with inner reinforcement ribs, for higher durability in tough conditions. The boom ends are cast end mounting, which has positive reliability impact over fabricated ends. graphite Impregnated bronze bushes at boom arm joints and boom foot, provide long duration maintenance.

Boom Length 6m (20ft.)



- ✓ High tensile steel
- ✓ Large cross section, reduced bending
- + Graphite impregnated bronze bushes
- + Thickened steel plates
- + Heavy duty casted pivot points
- ✓ Robotic welding, consistent welding pass

Arm Length
2.98m (Std.) / 2.40m (Opt.)



- + Rock guard
- ✓ Heavy duty casted pivot points
- ✓ Robotic welding



EXCELLENT PERFORMANCE

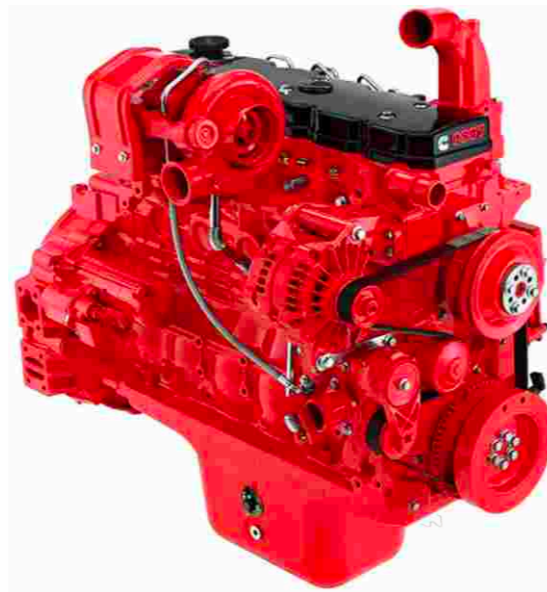
The new 926E_{XD} is a tough machine that is simple to use, safe and comfortable for the operator. It excels in the vital areas of productivity and efficiency, backed by advanced NFC and OC Hydraulic system, inbuilt IPC and fitted with SFe-ISR system, thereby increasing the earning potential over its lifetime.

KEEPING YOUR FUEL COSTS LOW

Fuel is one of the biggest overheads, so every saving makes a difference. The new 926E_{XD} is powered by a smart cummins engine. This inline 6-cylinder, direct injection turbo-charged ADACR engine with HTLR technology, looks for ways to save fuel. During the work cycle, it automatically regenerates itself ensuring you have the power you need whilst saving fuel. The engine is perfectly matched to mechanical, electrical and hydraulic systems to get the most out of every drop of fuel.

INTELLIGENT POWER CONTROL(IPC) SYSTEM

926E_{XD} advanced Intelligent power control (IPC) system intelligently delivers the power you need- when you need it. This new generation computer-aided IPC system, allows the excavators mechanical, electrical and hydraulic systems, to work together, in perfect harmony and helps operators get more from the machine.



CLASS LEADING DIGGING FORCE

Punching a massive **179 kN** of digging force, the new 926E_{XD} easily outperforms any competitive machine in its class.

The source of this awesome power comes from a combination of a powerful engine, superior hydraulic system and lightweight working modes.



MAXIMISING PRODUCTIVITY THROUGH SFe-ISR FUEL SYSTEM

- 1 Second**
If no hydraulic signal detected from joystick, engine speed dropped by 100 rpm.
- 3 Second**
If no hydraulic signal detected over 3 sec, engine speed goes to idle state leads to fuel saving's.

HIGHLY EFFICIENT HYDRAULICS

The advanced Hydraulic System in 926E_{XD} has been optimized for operational performance. It uses OCHS(Open-Centre Hydraulic System) & NFCHS(Negative Flow Control Hydraulic System) technology to deliver improved cycles times, power and precise control, where the operator really needs it, making even the toughest jobs, simple. The large displacement, electronically controlled hydraulic pumps and valves provide hydraulic oil as it is needed, reducing heat loss and further reducing fuel consumption.



RIGHT POWER FOR THE JOB

To make work easy, the 926E_{XD} has a Quick access, integrated work Modes, which allows you to select the best work mode for the job in hand. With a choice of six modes, each designed to match engine speed, pump flow, and system pressure to the chosen application, you can be sure that you are always working in the most cost effective way:

Economy (E) mode – for light work

Fine (F) mode – for precise operation

Power (P) mode – for heavy duty

Lifting (L) mode – for lifting operation

Breaker (B) mode – for breaker

Attachment (P) mode – extra attachment



QUICK ACCESS TOUCH

ENHANCED UPTIME

The New 926ExD is designed to deliver maximum uptime, shift after shift. With toughness and durability built into the heart of machine, the 926ExD works harder for longer in the toughest of jobsites.

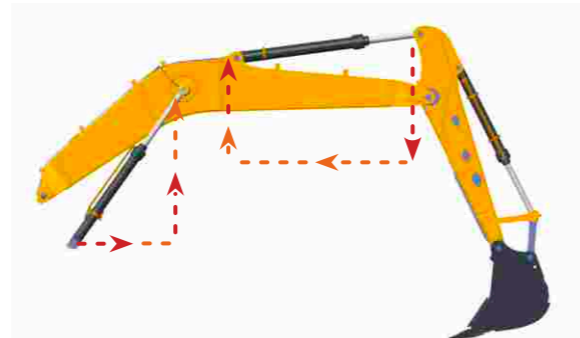
EXTREME TESTING

Toughness and durability are key to maximizing uptime. We don't just talk about toughness – we prove it with thousands of hours' worth of reliability testing. All the key components on the New 926ExD have been tested to the extreme in our state-of-the-art testing facility.



Our boom arm for example, undergoes a gruelling Swing Test to prove its durability in the toughest applications.

BOOM & ARM REGENERATION



This system optimizes hydraulic flow when boom or arm goes downward then downward force generated by their weight push the fluid in cylinders, minimizes the need of power from outside the system leading to excellent performance and efficient fuel consumption.

BOOM PRIORITY FUNCTION

Boom priority spool is auto piloted which prioritize boom operation, results in excellent performance during extreme duty applications.

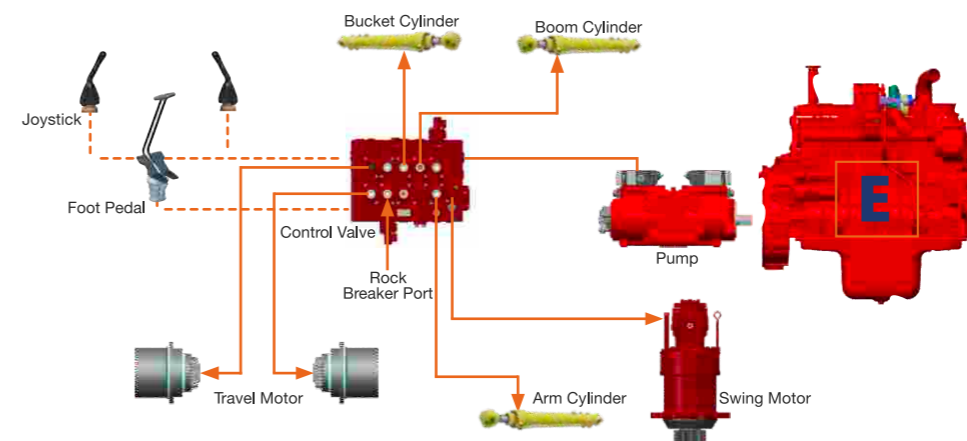


CLEAN FUEL SYSTEM

We understand the customers challenge for clean fuel with no contaminants, therefore we provide a unique **3 Stage Fuel Filtration system**

- 1st Stage: Pre-Fuel filter with integrated Water Separator,
- 2nd Stage: Primary Fuel filter with integrated Water Separator,
- 3rd Stage: Secondary Fuel Filter and **antirust fuel tank** to protect the engine.

BEST IN CLASS HYDRAULICS



ENGINE OVERHEAT PROTECTION



LONGER SERVICE LIFE. LOWER FUEL CONSUMPTION.

The 926ExD delivers on site as well as it does on the balance sheet.

ERGONOMICALLY DESIGNED CABIN

The Cabin of 926E XD has been ergonomically designed with attention to detail. It's a wide spacious cab with Well-placed door handles, long safety rails and anti-slip tape, that makes it easy and safe, for the operator to enter and exit the cab, in all weathers and conditions



EVEN EASIER CONTROL

Long days at the jobsite can put a physical strain on the operator, so we've designed our machine to be easier to handle. We've added an electronically controlled right and left joystick console to take the strain out of the job.

ANOTHER VISIBILITY LEADER



The 926E XD uses thin Joysticks, Large roof hatch, ergonomically located controls, which are easy to see, easy to reach and easy to operate and acushioned seat, thereby making it comfortable for the operator to work longer

MORE SPACE FOR YOU

In this new cab, the operator has a multi-adjustable pneumatic comfortable seat with reclining backrest. The mechanical suspension seat, adjusts automatically as per operator weight. The seat height, inclination and arm rest are adjustable.



REAL-TIME INFORMATION

A large, multi-function, easy-to-read, full-color 7-inch LCD monitor displays all the critical machine monitoring information the operator needs, including working mode, hydraulic oil temperature, hydraulic pressure and service intervals.



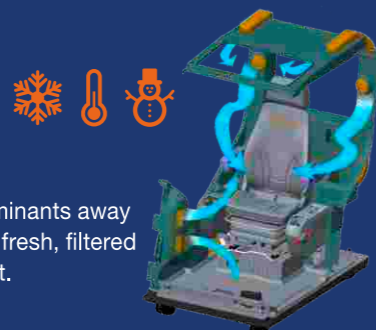
COMFORT, WHATEVER THE WEATHER

Air-conditioner is standard. It has advanced climate control, to handle the changing seasons and is completely sealed to prevent dust contamination. It is sound proofed.



CLASS-LEADING VENTILATION

Our new pressurized cab keeps dust, noise and contaminants away while the automatic climate control surrounds you with fresh, filtered air for cooling or heating depending on the environment.



EXTRA COOLING

Water Chiller-Extra Comfort

EASY MAINTENANCE AND SAFE OPERATIONS

LiuGong excavators have been specifically designed for Easy MAINTENANCE, in even the most remote and harsh environments. For speed and simplicity, the engine covers, fuelling and maintenance access points have been designed to make daily checks and maintenance pain free so you can get back to work faster.



SAFER ACCESSIBILITY

Radiator, Oil Cooler & Fuel Cooler are arranged together, thereby making it easy to Clean, Remove & Assemble. In addition, we provide a net-guard for protection against external debris.

CENTRALIZED LUBRICATION POINTS

To save valuable time, we have centralized the lubrication points on both the arm and boom to make them quicker and easier to maintain.



EASY DOES IT

The layout of the engine oil filter and fuel filters is remote to ensure easy access from the ground, for daily maintenance checks. In addition to this we provide a unique design for the pre-fuel filter with integrated water separator, which is the feed pump – this is mounted on the fuel filter itself to improve accessibility and facilitate daily checks



External Electric Box



Air Pre Cleaner



Radial Seal Air Filter



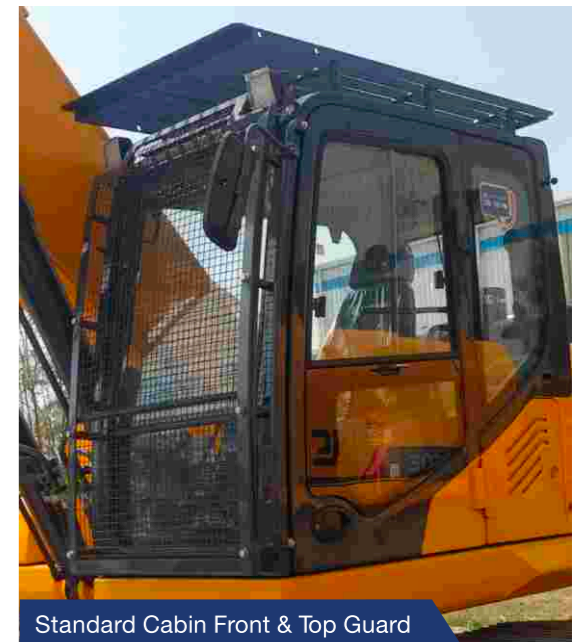
Graphite Bushes



Safety Lever



Anti-Skid Plate/Rail



Standard Cabin Front & Top Guard

926E XD SPECIFICATIONS. >>>



ENGINE

Make	CUMMINS
Engine Model	QSB7
Gross Power	188 hp @ 2,050 rpm
Peak Torque	800 N·m @ 1,200 rpm
Number of Cylinders	6
Displacement	6.7 L
Aspiration	Turbocharged

HYDRAULIC SYSTEM

Main Pump

Main Pump Type	Two Variable Displacement Piston Pumps
Maximum Flow	2 x 240 LPM

Main Pump

Type	Gear Pump
Maximum Flow	19 LPM

Relief Valve Setting

Implement	34.3/37.3 MPa
Travel Circuit	34.3 MPa
Swing Circuit	28.5 MPa
Pilot Circuit	3.9 MPa

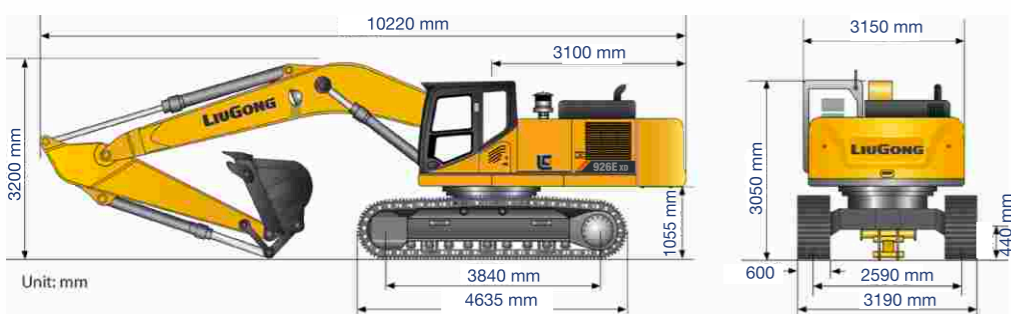
SWING SYSTEM

Swing Speed	12 rpm
Swing Torque	80, 00 N·m
Swing Motor	Axial Piston Motor
Swing Reduction	Planetary Gear
Swing Bearing	Lubrication Grease Bathed

OPTIONAL

ARM	2500 mm
RB Pipeline	

STATIC DIMENSIONS



BUCKETS

XD Bucket	1.35 m ³
GP Bucket	1.5 m ³

UNDERCARRIAGE

Center Frame	X-Plate
Track Frame	Box Type
Track Shoe Each Side	51
Track Guard	3
Shoe Width, Triple Grouser	600 mm
Bottom Rollers Each Side	9
Top Rollers Each Side	2

SERVICE CAPACITIES

Fuel Tank	540 L
Engine Oil	25 L
Final Drive	5.5 Lx2
Cooling System	25 L
Hydraulic System Total	330 L
Swing Device	4.4 L
Hydraulic Reservoir	210 L

DRIVE SYSTEM

Drive Motor	Axial Piston Motor
Drive Reduction	Planetary Gear
Max. Drawbar Pull	248 kN
Travel Speed (High/Low)	(5.1/3.3) Km/h
Gradeability	70% (35°)

ELECTRICAL SYSTEM

Voltage	24 V
Battery	12 V, 120Ah x2
Working Lights	5

WORKING RANGE

Boom	6,000 mm
Arm	2,980 mm
A. Max. Digging Reach	10,330 mm
B. Max. Digging Reach on Ground	10,155 mm
C. Max. Digging Depth	6,915 mm
D. Max. Digging Depth 2.44m (8')	6,710 mm
E. Max. Vertical Wall Digging Depth	6,060 mm
F. Max. Cutting Height	9,815 mm
G. Max. Dumping Height	6,830 mm
H. Min. Front Swing Radius	3,645 mm
Bucket Digging Force (ISO)	179 kN
Arm Digging Force (ISO)	134 kN
Bucket Capacity	1.35/1.5 m ³

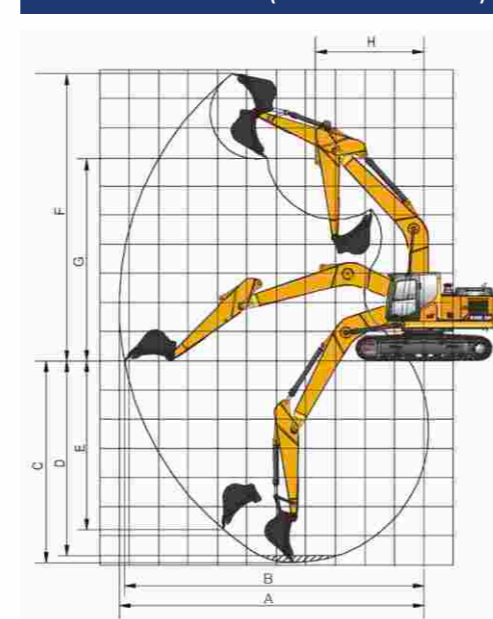
TELEMATICS

I-Link (GPS)	Available
--------------	-----------

OPERATING WEIGHT

Operating Weight	26,500 kg
Shoe Ground Pressure	56.4 kPa

WORKING DIMENSIONS (Reference Bucket - 1.5 m³)



Lifting capacity at the arm end without bucket, for lifting capacity including bucket, weight of the bucket or the bucket with quick coupler must be deducted from the lifting capacities.

Lifting capacities are based on the machine Standing on a firm, uniform supporting surface.



Rating over - front (Cf)



Rating over - side (Cs)

1. Do not attempt to lift or hold any load that is greater than these rated values at their specified load radius and height. Weight of all accessories must be deducted from the above lifting capacities.

2. The rated loads are in compliance with ISO 10567 hydraulic excavator lift capacity rating standard. They do not exceed 87% of hydraulic lifting capacity or 75% tipping load.

3. Ratings at bucket lift hook.

4. Lifting capacities are based on machine standing on level, firm and uniform ground.

5. *Indicates the load is limited by hydraulic capacity rather than tipping capacity.

6. Operator should be fully acquainted with the operator's and Maintenance Instructions before operating this machine and rules for the safe operation of equipment should be adhered to at all times.

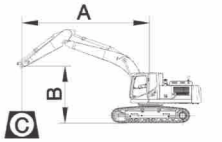
LIFTING CAPACITY (METRIC)

926E XD with 600 mm shoes, 2,980 mm arm

A: Load radius
B: Load point height
C: Lifting capacity
Cf: Rating over front
Cs: Rating over side

Conditions

Boom length: 6,000 mm
Arm length: 2,980 mm
Bucket: ISO 1.35 m³, 1120kg
Counterweight: 5,400 kg
Shoes: 600 mm
Unit: kg



B (m)	A (Unit: m)														MAX REACH A (m)	
	2		3		4		5		6		7					
	Cf	Cs	Cf	Cs	Cf	Cs	Cf	Cs	Cf	Cs	Cf	Cs	Cf	Cs		
6										*6870	*6870	*6770	*5490	*5480	*4690	7.70
5							*7960	*7960	*7390	6840	*7030	5410	*5230	*4210	8.20	
4					*10990	*10990	*9160	8670	*8110	6630	*7460	5300	*5470	3940	8.50	
3					*13400	11400	*10510	8280	*8940	6410	*7980	5160	*5570	3750	8.70	
2					*15450	10780	*11770	7930	*9750	6190	7950	5020	*5540	3640	8.80	
1					*14800	10420	*12730	7660	9810	6010	7820	4900	5720	3650	8.70	
0					*15880	10260	12840	7500	9660	5880	7710	4800	5780	3670	8.60	
-1			*11020	*11020	*16930	10220	12740	7420	9580	5800	7650	4750	6050	3830	8.30	
-2	*11650	*11650	*15380	*15380	*16410	10250	12720	7400	9550	5780	7640	4740	6480	4080	7.90	
-3	*15970	*15970	*17440	15750	*15470	10340	*12630	7450	9590	5820	7680	4780	7260	4550	7.30	
-4			*16310	16010	*13950	10500	*11460	7570	*9400	5920			*8370	5360	6.50	

Buckets	Bucket Capacity (Heaped m ³)	Width (mm)	Weight (kg)	Material Density (kg/m ³)						
				800	1000	1200	1400	1600	1800	
Xtreme Duty (XD)	1.35	1410	1154							
General Purpose (GP)	1.5	1554	1187							

*Available on special Demand

Notes